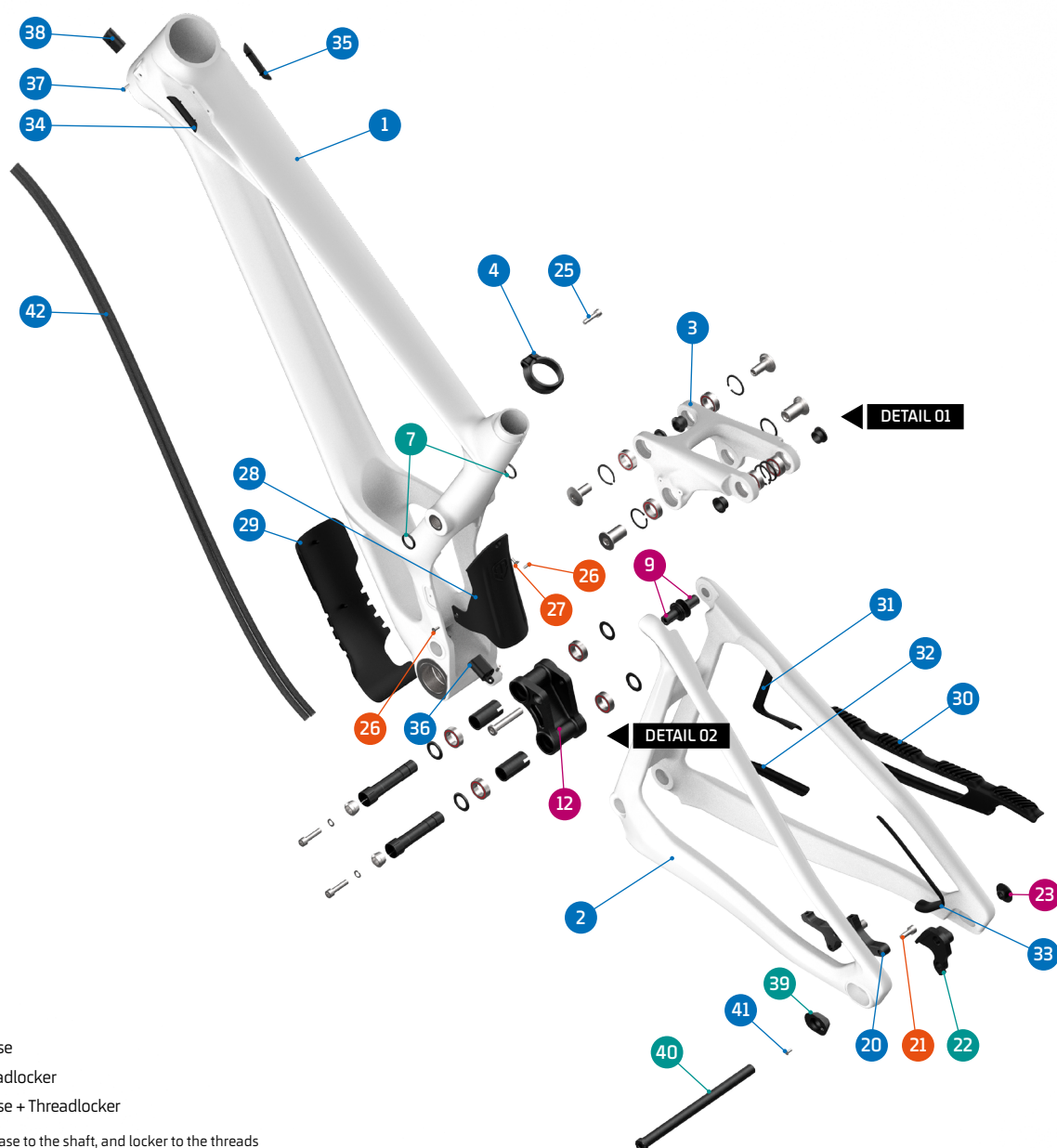


# SUMMUM CARBON



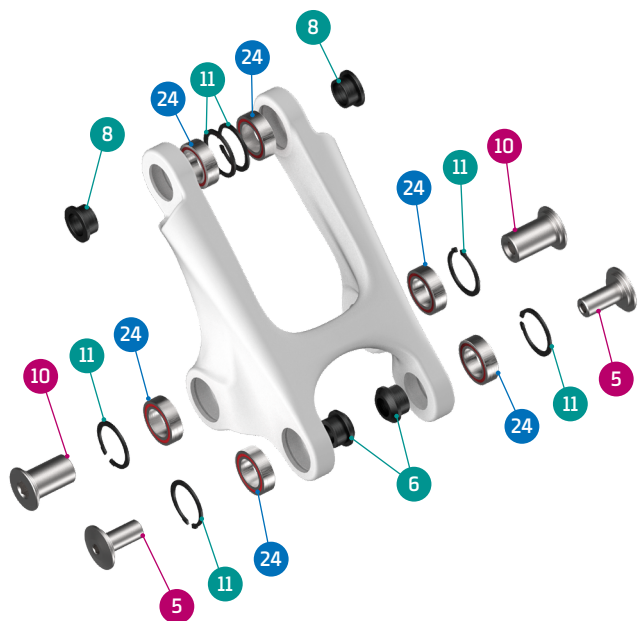
- Grease
- Threadlocker
- Grease + Threadlocker

Apply grease to the shaft, and locker to the threads

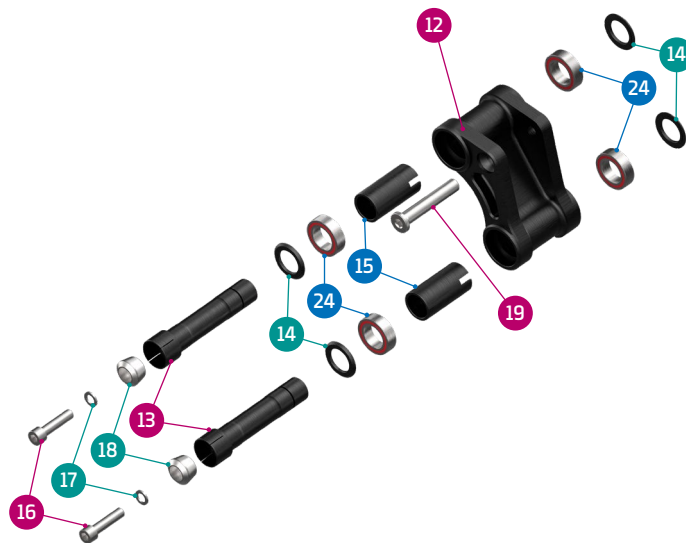
| ITEM No. | DESCRIPTION             | QTY. | PART NUMBER       | TORQUE |
|----------|-------------------------|------|-------------------|--------|
| 1        | FRONT TRIANGLE RR       | 1    |                   |        |
| 2        | REAR TRIANGLE R         | 1    |                   |        |
| 3        | UPPER LINK              | 1    |                   |        |
| 4        | SEAT CLAMP 37mm         | 1    | SET 9             |        |
| 5        | SHOCK BOLT              | 2    | SET 2             | 8Nm    |
| 6        | SPACER, 10x17x6         | 2    | SET 2             |        |
| 7        | SPACER, 15x19x2.5t      | 2    | SET 3             |        |
| 8        | UPPER LINK-RT SPACER    | 2    | SET 3             |        |
| 9        | PIVOT AXLE, M12         | 2    | SET 3             | 12Nm   |
| 10       | PIVOT AXLE, M12         | 2    | SET 3             | 12Nm   |
| 11       | C-RING                  | 6    | SET 3             |        |
| 12       | LOWER LINK              | 1    | 099.22021         |        |
| 13       | MAIN AXLE, 15x80L       | 2    | SET 4             | 12Nm   |
| 14       | SPACER, 15x24x2         | 4    | SET 4             |        |
| 15       | INNER LOWER LINK SPACER | 2    | SET 4             |        |
| 16       | SCREW BOLT              | 2    | SET 4             | 10Nm   |
| 17       | SPACER                  | 2    | SET 4             |        |
| 18       | TAPER NUT               | 2    | SET 4             |        |
| 19       | SHOCK BOLT              | 1    | SET 2 / 099.22066 | 16Nm   |
| 20       | DISC ADAPTOR            | 1    | SET 6             |        |
| 21       | SCREW BOLT              | 2    | SET 6             | 10Nm   |

| ITEM No. | DESCRIPTION                  | QTY. | PART NUMBER | TORQUE |
|----------|------------------------------|------|-------------|--------|
| 22       | REAR HANGER CENTER           | 1    | SET 5       |        |
| 23       | HANGER NUT                   | 1    | SET 5       | 5Nm    |
| 24       | BEARING, 24X15X7 (3802V-2RS) | 10   | SET 1       |        |
| 25       | SCREW BOLT                   | 1    | SET 9       | 5Nm    |
| 26       | SCREW BOLT                   | 2    | SET 10      | 3Nm    |
| 27       | SCREW BOLT                   | 1    | SET 10      | 3Nm    |
| 28       | MUD FENDER                   | 1    | SET 10      |        |
| 29       | DOWN TUBE PROTECTOR          | 1    | 099.22010   |        |
| 30       | CHAIN STAY PROTECTOR         | 1    | 099.22011   |        |
| 31       | MIDDLE STAY PROTECTOR        | 1    | 099.22012   |        |
| 32       | CHAIN STAY PROTECTOR SHORT   | 1    | 099.22013   |        |
| 33       | SEAT STAY PROTECTOR          | 1    | 099.22014   |        |
| 34       | TOP TUBE BUMPER LEFT         | 1    | 099.22015   |        |
| 35       | TOP TUBE BUMPER RIGHT        | 1    | 099.22016   |        |
| 36       | CABLE GUIDE LOWER LINK       | 1    | 099.22017   |        |
| 37       | SCREW BOLT                   | 2    | 099.22020   |        |
| 38       | CABLE GUIDE HEAD PIPE        | 1    | 099.22018   |        |
| 39       | DROPOUT CHIP CENTER          | 1    | SET 11      |        |
| 40       | HUB AXLE                     | 1    | 099.22019   | 8Nm    |
| 41       | SCREW BOLT                   | 1    | SET 11      |        |
| 42       | INTERNAL CABLE GUIDE         | 1    | 099.21010P  |        |

DETAIL 01



DETAIL 02



SET 1

ZERO BEARING KIT 25



SET 2

SHOCK HARDWARE KIT 16



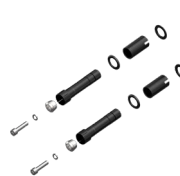
SET 3

UPPER LINK KIT 30



SET 4

LOWER LINK KIT 28



SET 5

HANGER M075 + NUT



| PART NUMBER | DESCRIPTION   | COMPONENTS  |
|-------------|---|---|
| 099.22100   | SET 1: ZERO BEARING KIT 25                              | BEARING, 24x15x7 (x10)  |
| 099.22200   | SET 2: SHOCK HARDWARE KIT 16                            | SPACER, 10x17x6 (x2) / SHOCK BOLT (x2) / SHOCK BOLT (x1)  |
| 099.22300   | SET 3: UPPER LINK KIT 30                                | SPACER, 15x19x2.5T (x2) / UPPER LINK-RT SPACER (x2) / PIVOT AXLE, M12 (x2) / PIVOT AXLE, M12 (x2) / C-RING (x6)               |
| 099.22400   | SET 4: LOWER LINK KIT 28                                | MAIN AXLE, 15x80L (x2) / SPACER, 15x24x2 (x4) / INNER LOWER LINK SPACER (x2) / SCREW BOLT (x2) / SPACER (x2) / TAPER NUT (x2) |
| 099.00063   | SET 5: HANGER M075 + NUT                                | REAR HANGER CENTER (x1) / HANGER NUT (x1)   |
| 099.22003   | SET 6: DISC ADAPTOR KIT                                 | DISC ADAPTOR (x1) / SCREW BOLT (x2)   |
| 099.21500   | SET 7: GEO KIT HEADSET CUPS SUMMUM 21 1°-2° HT1.5X112MM | 2X HS ADAPTOR-1° 110 / 2X HS ADAPTOR-2° 110   |
| 099.22005   | SET 8: GEO KIT DROPOUT + BRAKE BRACKET                  | REAR HANGER LONG (x1) / REAR HANGER SHORT (x1) / DISC ADAPTOR SHORT-LONG (x1) / LEFT CHIP SHORT-LONG (x1)                     |
| 099.22007   | SET 9: SEAT CLAMP                                       | SEAT CLAMP 37mm (x1) / SCREW BOLT (x1)  |
| 099.22008   | SET 10: FENDER KIT                                      | SCREW BLOT (x2) / SCREW BLOT (x1) / MUD FENDER (x1)   |
| 099.22009   | SET 11: LEFT CHIP DROPOUT NEUTRAL                       | DROPOUT CHIP CENTER (x1) / SCREW BLOT (x1)  |
| 099.22063   | BB TRANSPARENT PROTECTOR                                |   |